



ABIR Architects : The Gateway Project

Pecha Kucha Presentation 20 Slides X 20 Seconds

3 Components :

THE VISION :

A New Gateway built around the Museum's millpond encompassing facilities to meet the needs, expectations and experience of the visitors

THE BRIEF :

850msq of built form incorporating:

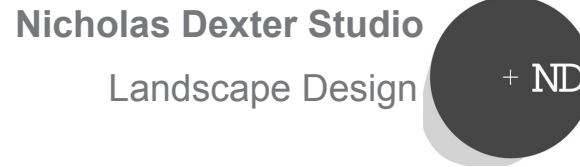
- Entry, Ticketing & Retail
- Three Orientation & Interpretation Galleries.
- Catering facilities with 86no. covers
- Community space
- Three historic buildings conserved & interpreted
- Improvement & expansion works to existing car parking areas including accessible parking.

THE CONCEPT :

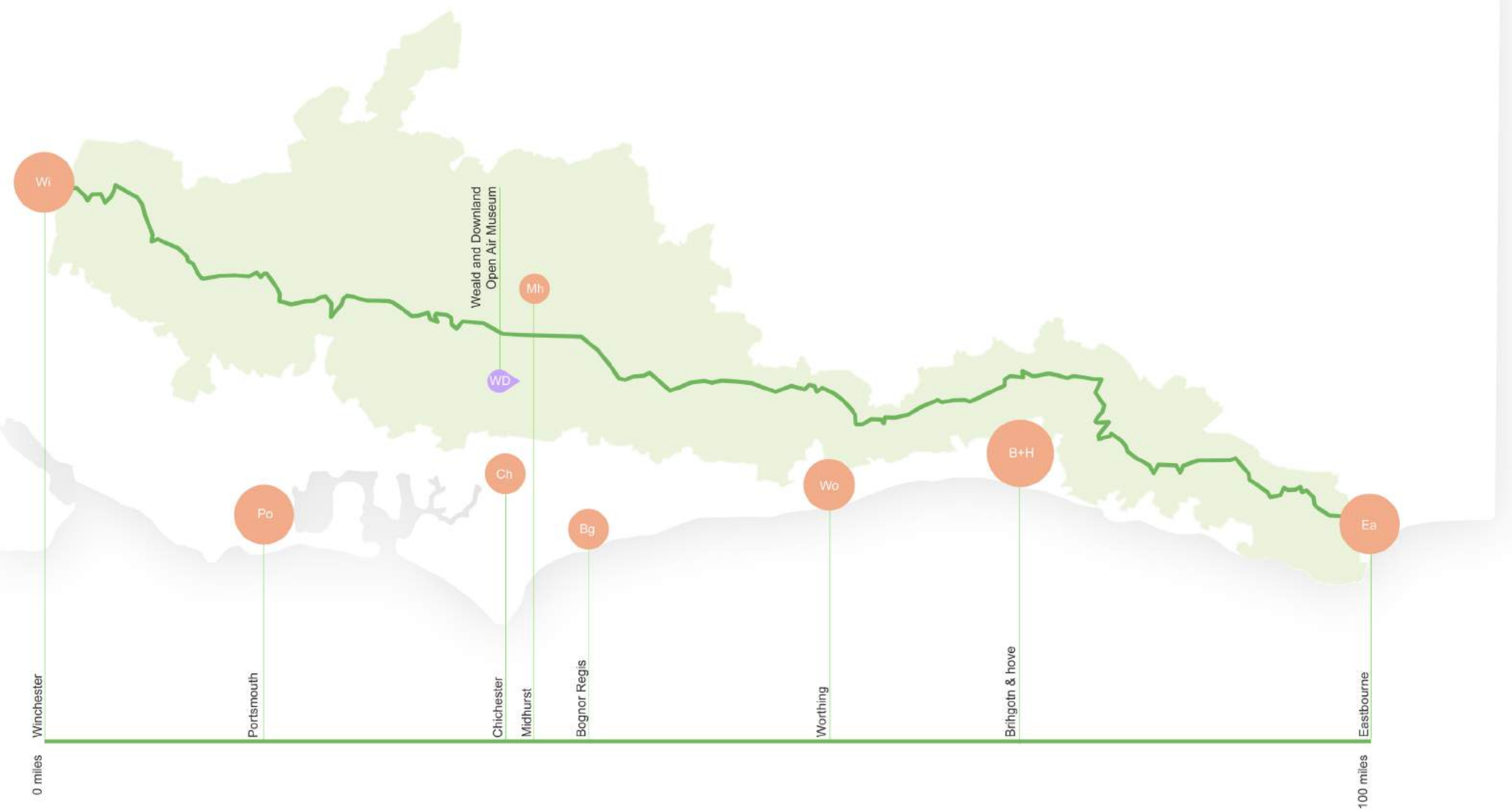
Farmstead Village Clusters opening views, vistas, & connections into the Museum through, between and within buildings.



The Team:

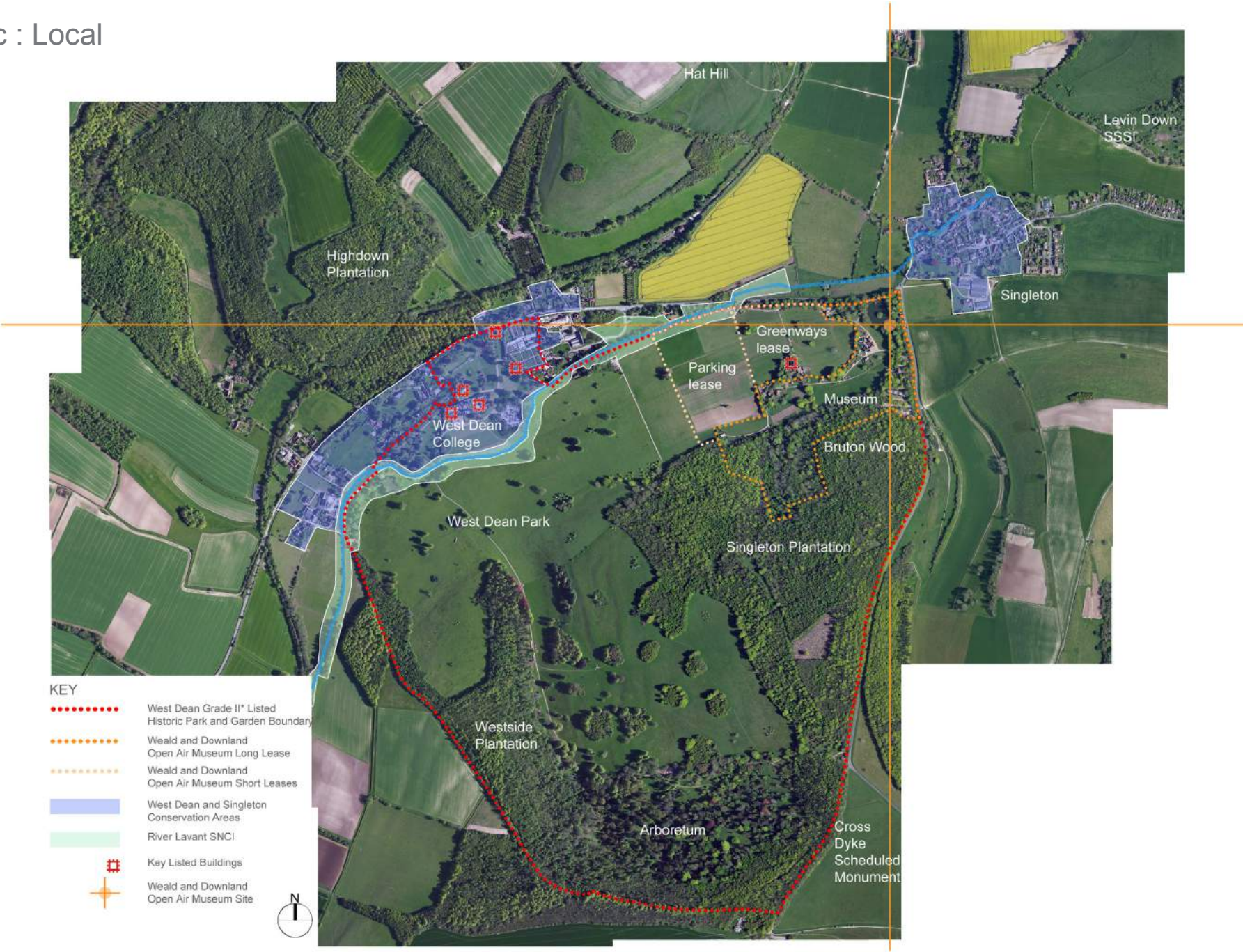


Geographical : South Downs National Park

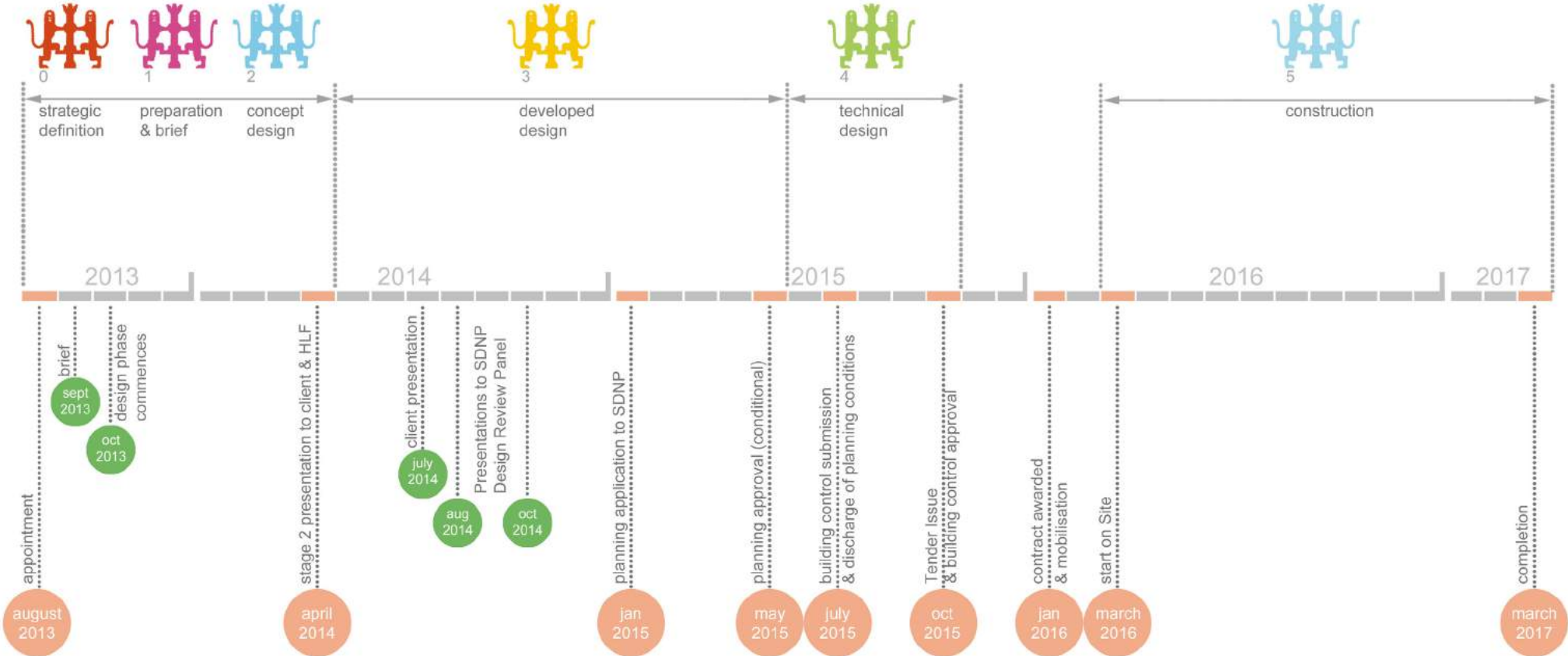


“.....undulating chalk slopes and clay-lined valleys which support woodland as well as arable farmland - typical built form of isolated farmsteads of 18th century origin or younger set within planted parkland.....”

Geographic : Local



Timeline



Constraints & Key Barriers



“The Museum is at a tipping point - for it to survive we need to engage the next generation of audiences, volunteers and users; and meet the expectations of today’s communities”... from the Weald and Downland Open Air Museum Forward Plan 2012-16

“.....at the site entrance you are presented with a view of the rear of the kitchens - there is no physical or intellectual connection with the Museum or its wonderful collection of buildings.....”

- **Site entrance** limited size & poorly situated.
- **Limited orientation**, interpretation/wayfinding.
- **Lack of participation** activities.
- **Inadequate access & circulation** for all
- **Car parking limited** - accessibility and numbers.
- **No pedestrian separation** from vehicles.
- **Very poor catering** offer.

Site Context & Design Intent



Contextual material palette



Advanced timber engineering



Traditional timber framing



Traditional timber boarding

Pastiche or Stark White Box ?

Design Intent.....(neither)

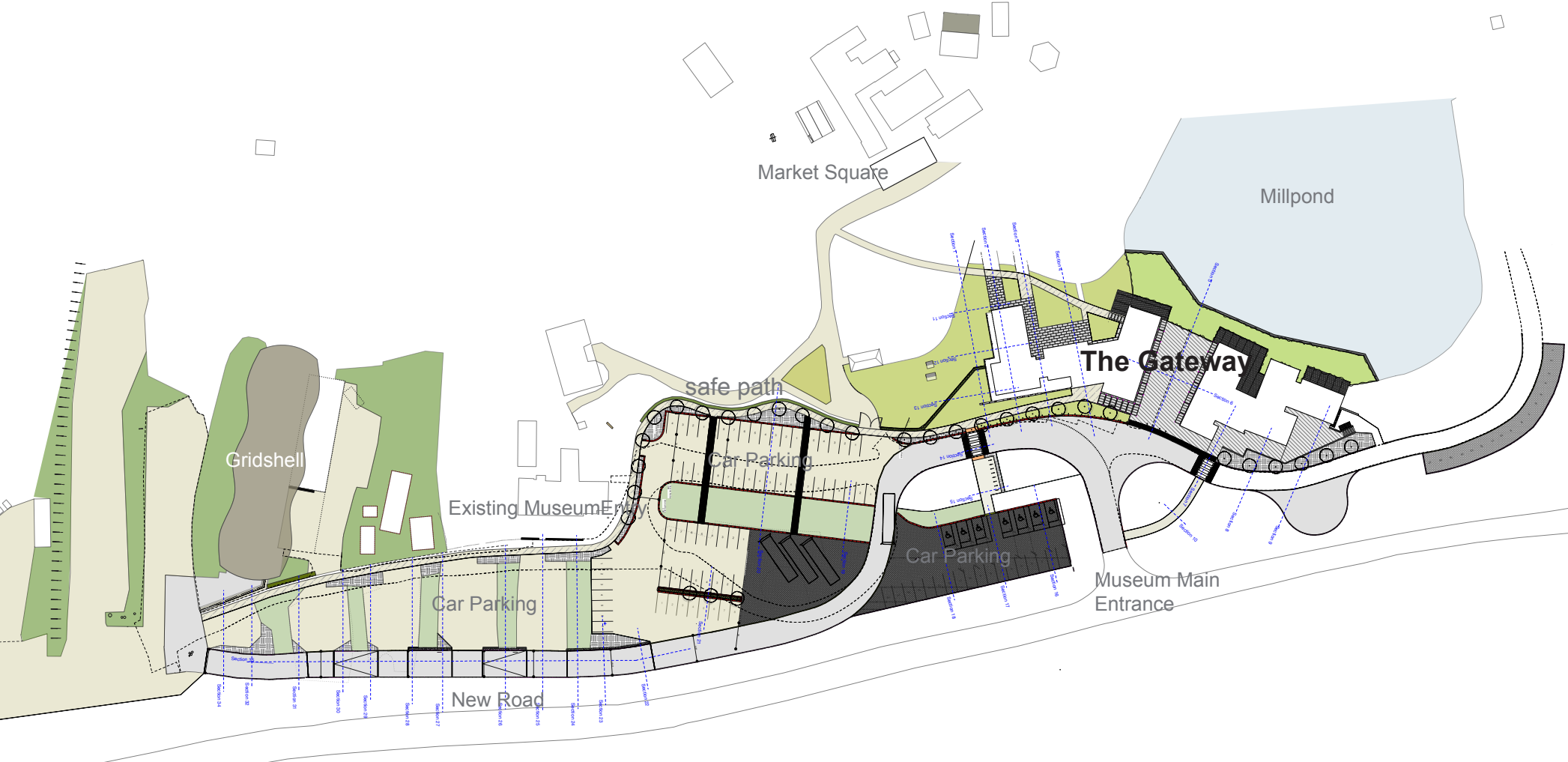
A transitional Gateway connecting the 21st century to the collection.

Simple and beautiful buildings bringing together contemporary detailing and traditional materials - green oak, hand made clay tiles, chestnut shakes, natural timber boarding and zinc.

Two clusters of buildings set around a central meeting place linking with a number of other external spaces for visitors to experience connections and views to the museum and its collection.

Improvement works to the existing car parking areas including safe access and approach and dedicated fully accessible parking.

Site Plan

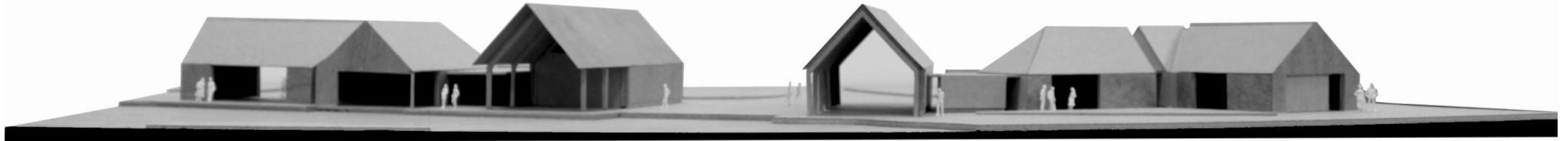


Plan

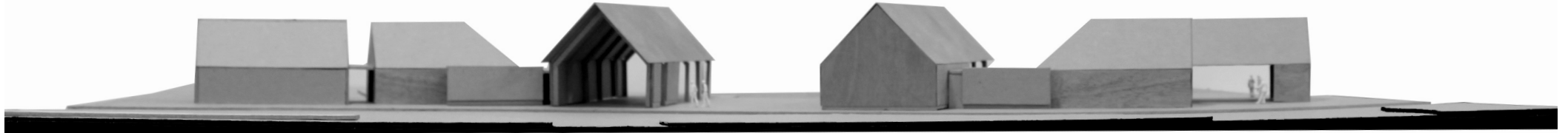


Model Development 1:100 FRAME & PLANE

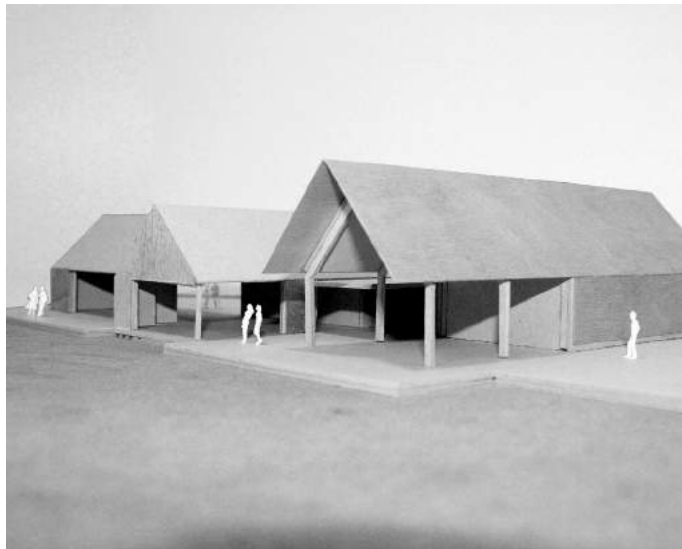
View Looking East from Millpond



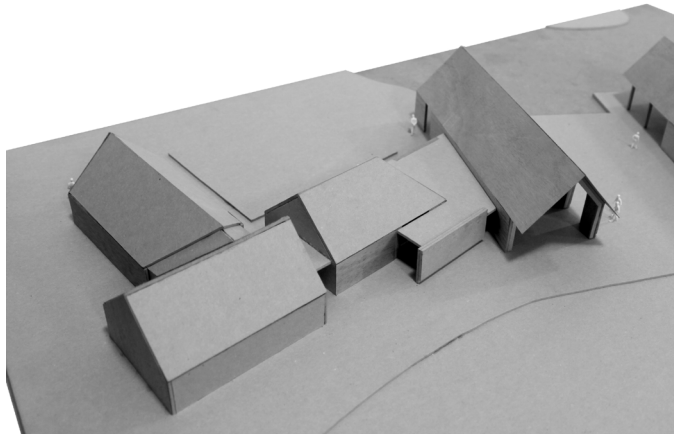
View Looking West from Entry Gate



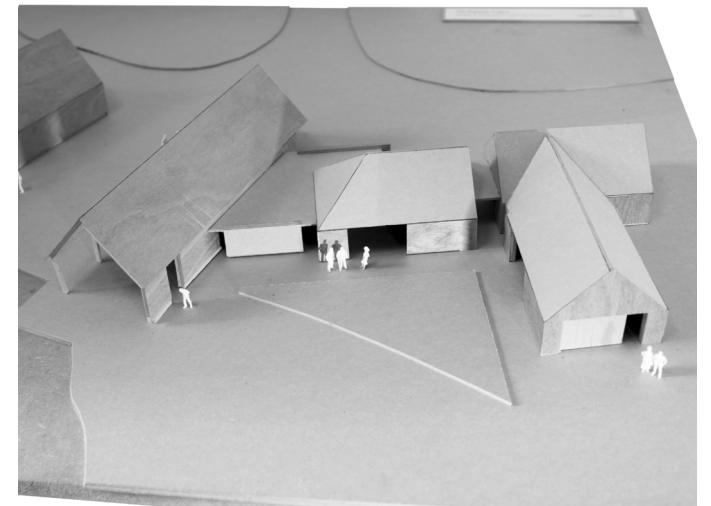
Elevational studies



View of cafe elements

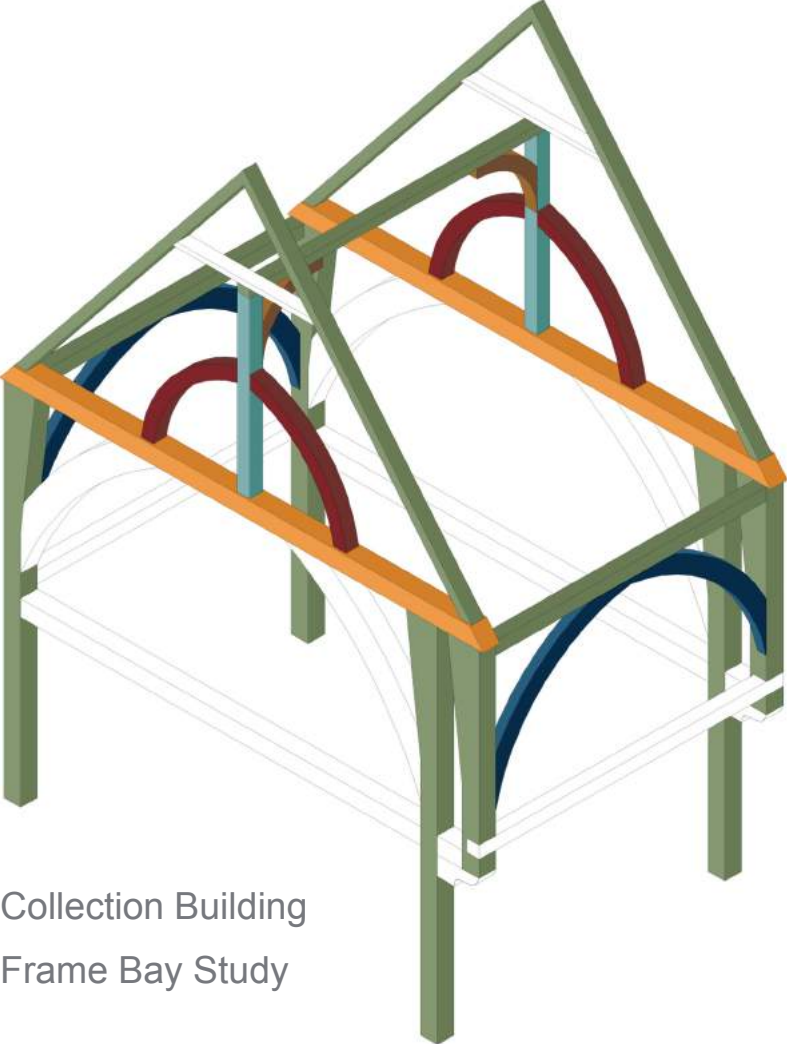


View of south cluster

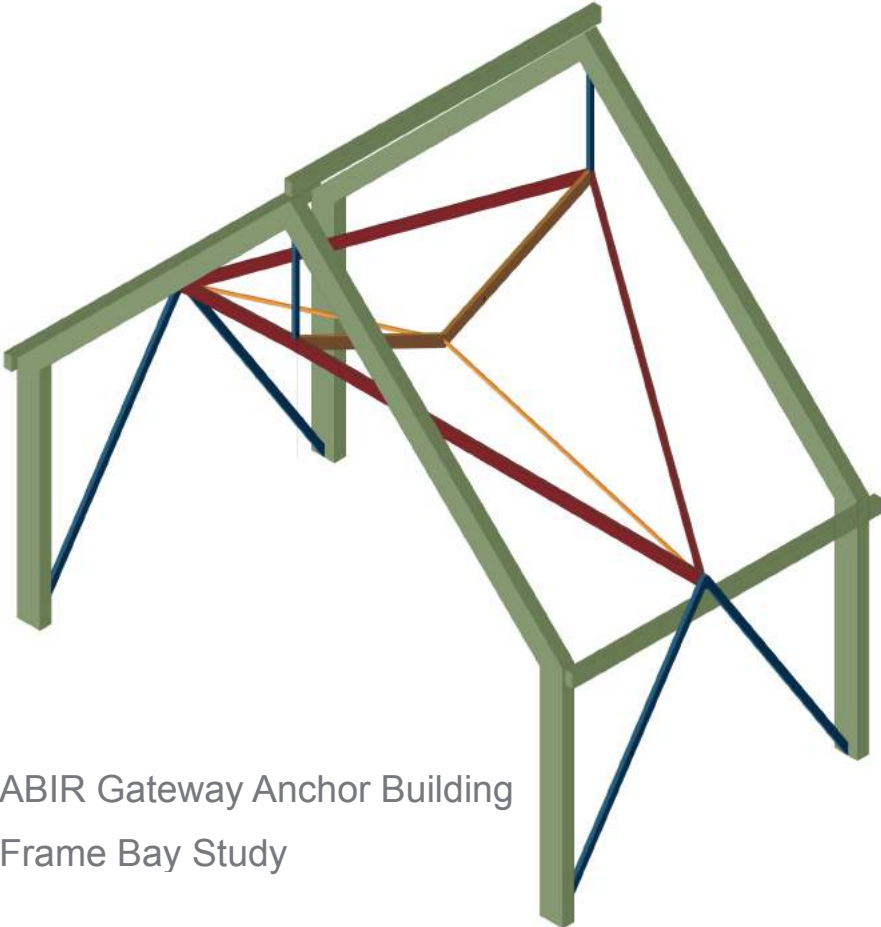


View of south cluster

FRAME : Timber Frame Analysis



Collection Building
Frame Bay Study

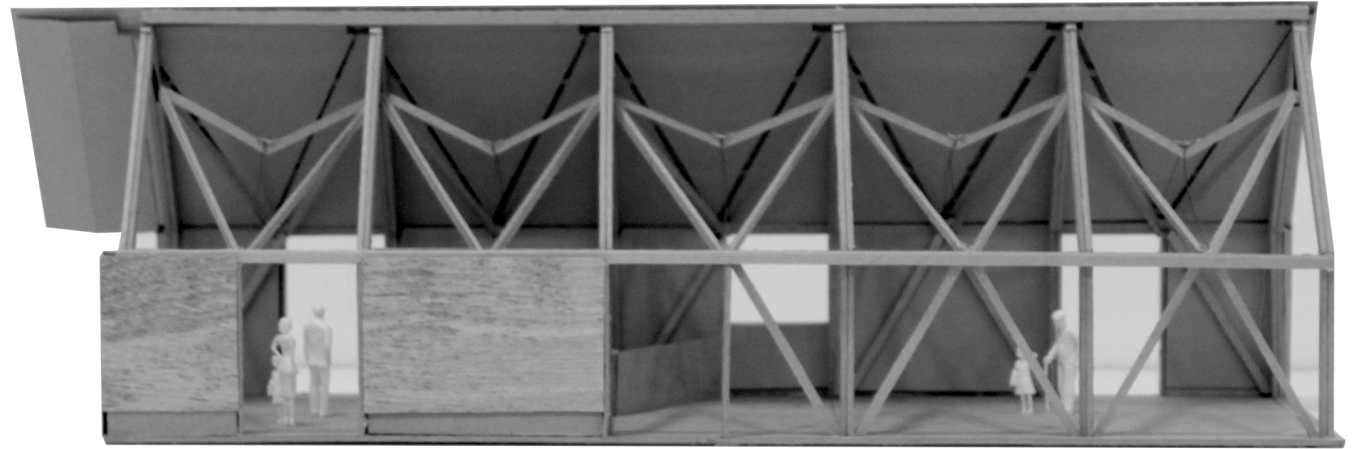


ABIR Gateway Anchor Building
Frame Bay Study

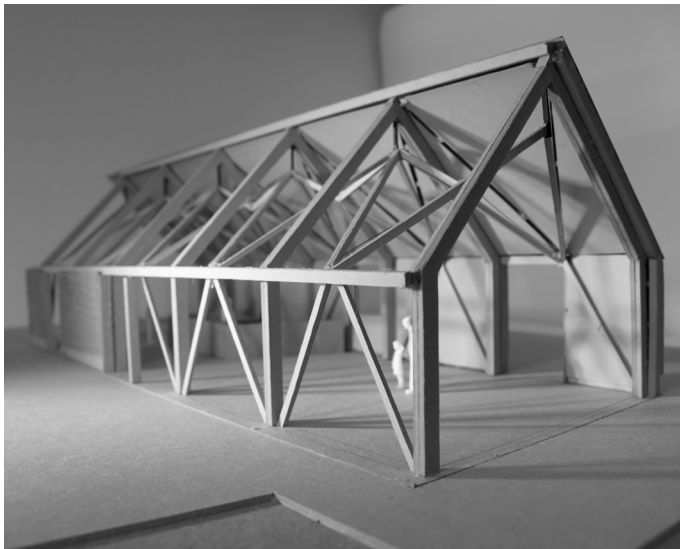
- principal frame (primary)
- tension tie [tie beam] (stabilising)
- roof strut/ wind brace [spear truss] (stabilising)
- wall strut/ wind brace (stabilising)
- kingpost (stabilising)

Timber Frame Model Development 1:50 scale

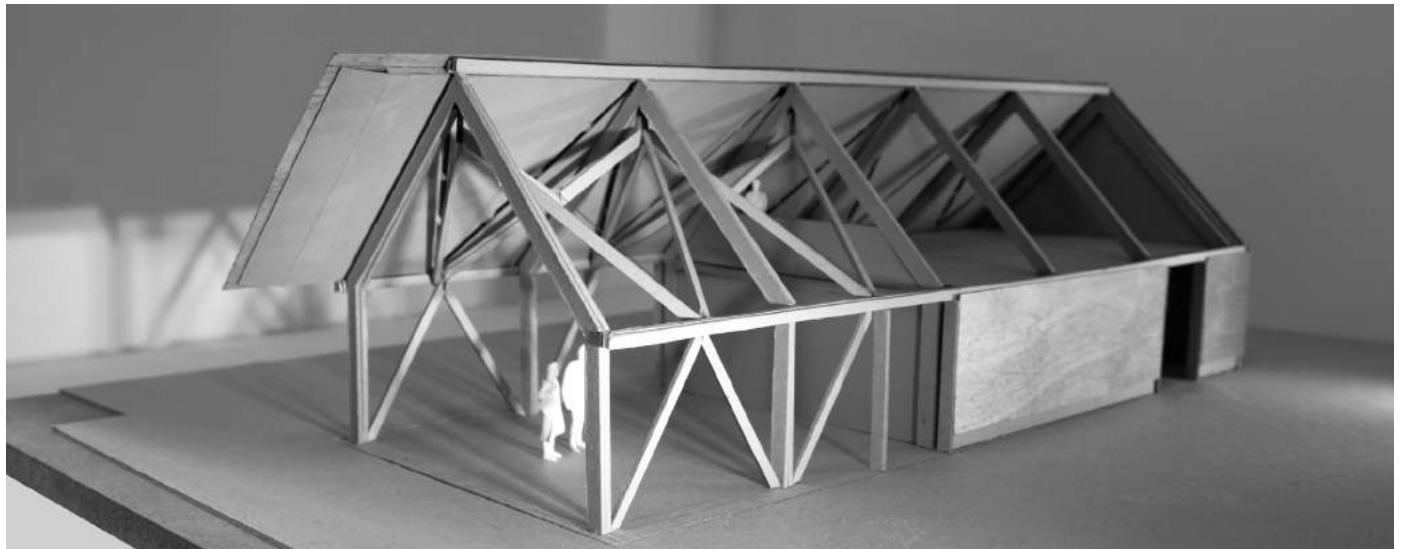
Design Exploration of the Frame : Aesthetics & Structural Integrity



Sectional view of south frame



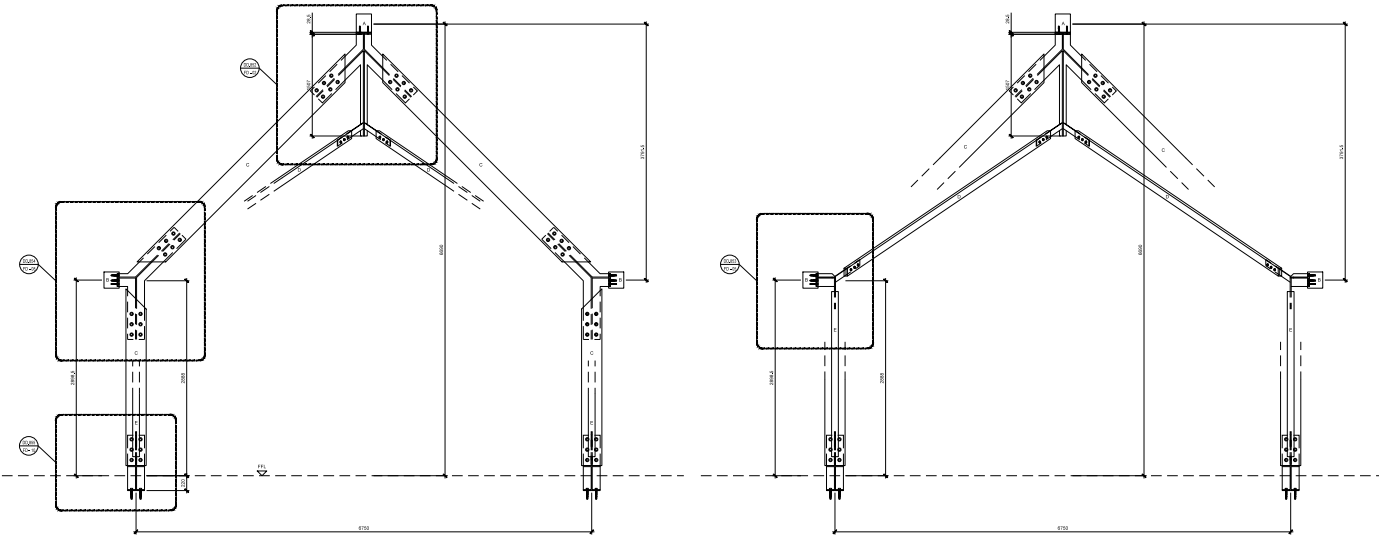
View of south frame



View of north frame

Green Oak Timber Frame : Detail Development

Components, Connections & Junctions : Timber and Stainless Steel



Frame detail sections



Foot connection



Eaves brace connection



Eaves portal connection



Ridge connection

Green Oak Timber Frame : Physical Development



Vertical Frame Elements



Slotted Structural Junction



Table Scarfed Joints to Ridge & Eaves Members



5-Way Junction at Eaves



Carpenter's Marks

PLANE : The Galleries and Cafe : Cross Laminated Timber



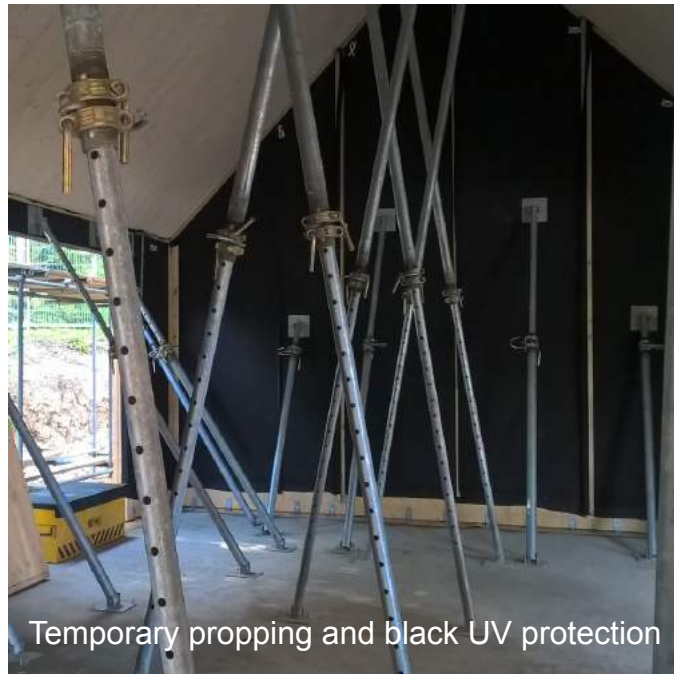
162mm Thick 5 Lamella Panels



Produced from kiln-dried finger-jointed spruce



Site Erection Piece by Piece



Temporary propping and black UV protection



Visual connections between volumes

External Materials



Sweet Chestnut roofing shakes



Wealden clay roofing tiles



Fair-faced concrete



Black zinc: standing seam



Sweet Chestnut boarding

Sweet Chestnut Roofing Shakes: Locally Sourced at Prickly Nut Wood, Hand Cleft



Prickly Nut Wood



Felled timber

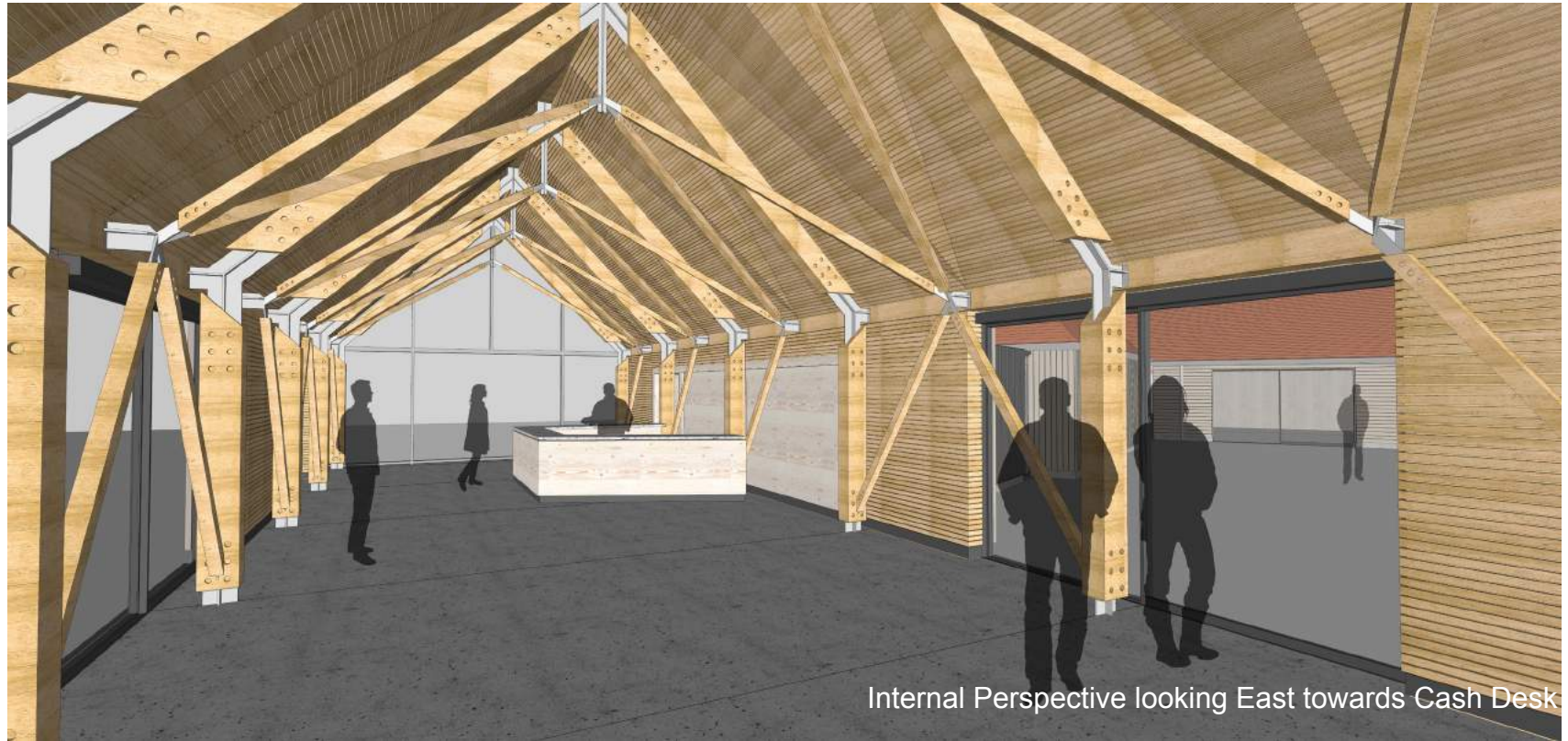


Split logs

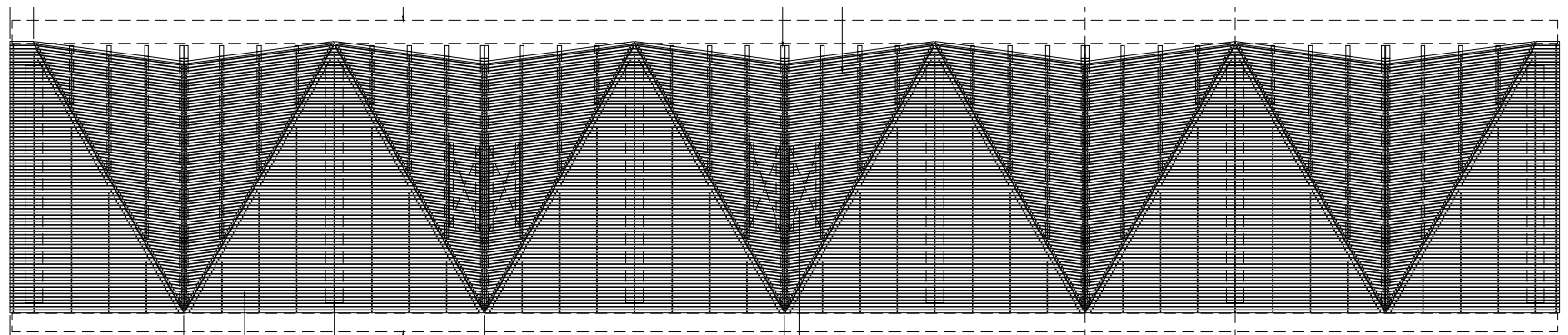


Finished shakes in storage

Entry, Ticketing & Retail South Anchor : Frame & Plane



Internal Perspective looking East towards Cash Desk



Elevation of 'Kite' Ceiling to Entry Anchor



Existing & Mid-Construction View looking East over Millpond



Existing & mid-construction view south local to Market Square

The Gateway Project: Weald & Downland Open Air Museum
ABIR Architects & Pilbeam Construction
Completion March 2017